

If you know somebody who may  
be eligible for

Youth Pathways or you would like  
further information you can call:

**(02) 9791 1144**

or Free Call 1800 170 899

You can call into our office at:

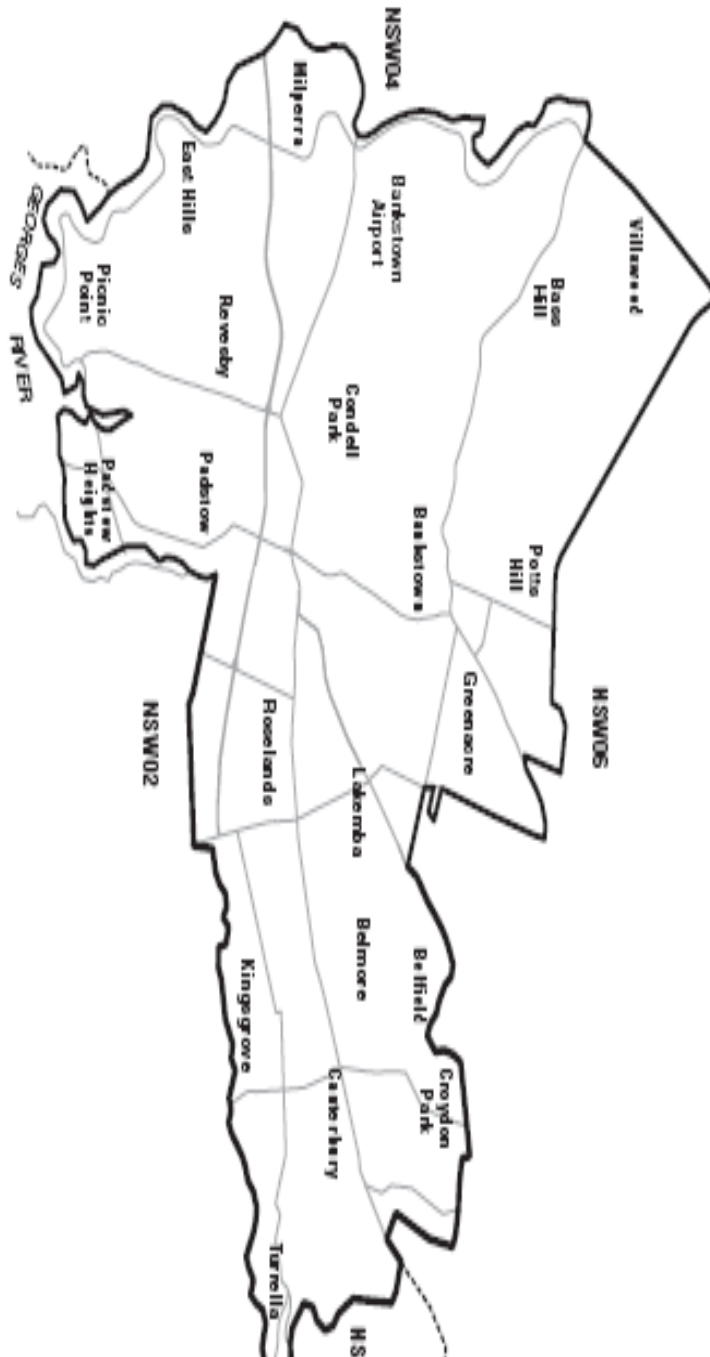
**6/46-48 Restwell Street,**

**Bankstown NSW 2200**

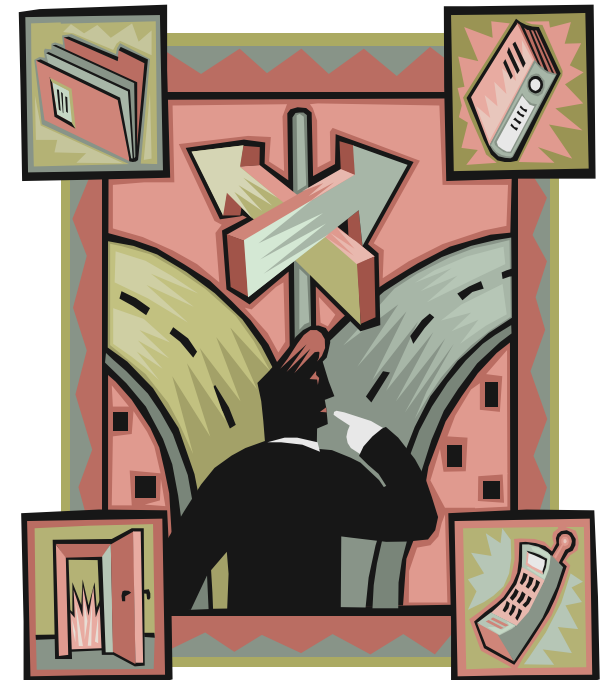
**Between 9.00am-5.00pm**



Below is our service region



**An Australian Government Initiative**



**YOUTH PATHWAYS**  
▶▶▶ A STEP IN THE RIGHT DIRECTION

## What is Youth Pathways?

Youth Pathways is designed to assist young people aged between 13-19 to make a successful transition through to year 12 (or equivalent) and ultimately to further education, training or employment.

The young person also needs to be at risk of leaving school or has left school in the last 12 months.

## How does Youth Pathways help individuals?

Youth Pathways is a personalised service specifically focused on each individual's needs.

Participants will receive ongoing support to assist them to overcome barriers that are getting in the way of Education, Training or Employment.

### Assistance may include:

- **Mentoring**
- **Counselling**
- **Assisting with Education, Training or Employment**
- **Referral to other support services**  
Example: Sporting, cultural, recreational and community activities
- **Workshops and Small Groups**

## Signs to look out for:

Some things to look out for maybe:

- **History of truancy**
- **History of detention/ suspension**
- **Low Grades**
- **Isolation from peers**
- **No respect for self or others**
- **Low Motivation**
- **Behavioural Problems**



## What students/ participants may be most at risk of?

Below are examples of factors that may make a young person eligible for Youth Pathways. There are also other contributing factors that are not listed.

### Educational Factors

- **Poor Literacy/ Numeracy**
- **Low academic performance**
- **Bullying or alienation**
- **Discouragement with school**

### Personal Factors

- **Medical Conditions**
- **Disabilities**
- **Depression**
- **Poor self-esteem**

### Social, Cultural and Community

#### Issues

- **Financial barriers**
- **History of criminal behaviour**
- **Homelessness**
- **Issues within family environment**