



Bring healing and hope through leaving a gift in your Will



Do all the good you can
because every life matters

Our vision

‘Do all the good you can, by all the means you can, in all the ways you can, in all the places you can, at all the times you can, to all the people you can, as long as ever you can.’



We acknowledge the Traditional Custodians of the land on which we work. We pay our respects to their Elders and the Elders from other communities past, present and future generations.

Our mission

Continuing the work of Jesus Christ in Word and deed

Over 200 years of caring

Hearing the voiceless, strengthening the vulnerable, comforting the lonely, giving hope when it's lost – our long history of Christian love and care to those in need has been built on the generosity of our supporters.

Lancelot Iredale's lifelong legacy

Imagine giving a gift that translates into more than one million nights of accommodation for people experiencing homelessness?

When Lancelot Iredale left a chapel as a gift in his Will to Wesley Mission, little did he know the lasting and wide-reaching impact he would have.

But Lancelot understood that lives could be changed. In his earliest days in Australia he had been a convict, transported for seven years for burglary.



Wesley Edward Eagar Centre (Artist's impression)

After arriving in Sydney in 1816 aboard the Mariner, Lancelot was given a fresh start. He used it to transform his life. A blacksmith by trade, he began a successful hardware business and became a philanthropist.

But Lancelot's reform also came from his deeply rooted faith. In 1847 he built a chapel at his own expense and left it as a gift in his Will to the Wesleyan Methodist denomination.

Days after Lancelot passed away in 1848, he was remembered at a city council meeting for his generosity.

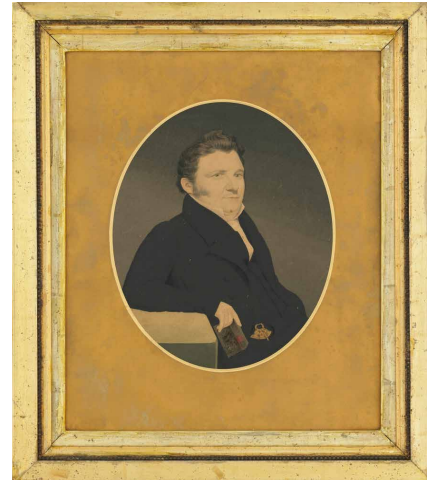
On 17 July 1848 The Sydney Morning Herald wrote, "For

many years he had been actively connected with almost every charitable institution in the colony: by his death the poor had lost a liberal benefactor and the citizens at large a sincere friend."

Lancelot's generous gift is still touching lives today. In 1978 the chapel building was redeveloped into accommodation for people in need in the community. Now known as Wesley Edward Eagar Centre, situated in the heart of Sydney's inner-city, it supports vulnerable adults in the community with short-term emergency accommodation and their next steps forward.

Lancelot's philanthropic legacy lives on through the

men and women who have found hope and experienced transformation through his generosity.



Lancelot Iredale, Esquire
Painted by Richard Read, October 1830

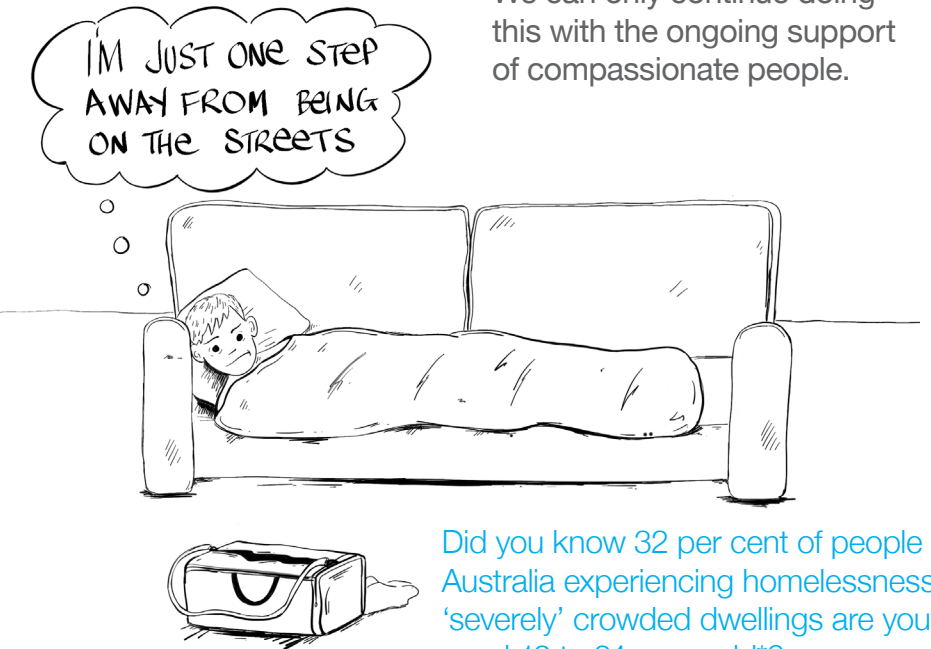
Imagine not having a safe place to call home?

It can happen after a sudden illness, unemployment, rent increases, family breakdown and violence. Anyone can lose their home and with it their security. Some have no choice but to live rough on the streets. Others sleep in overcrowded and unsafe conditions like in a boarding house, tent, garage, their car or on a friend's couch. Sadly, one of the main groups impacted are young people.

But no matter how or when someone becomes homeless, the hope of recovery is never lost. Helped by our generous supporters, Wesley Mission offers more than **190,000 nights of accommodation each year** to people needing

a safe place to stay. And we provide much more than just a bed. We help people in crisis to build resilience and find

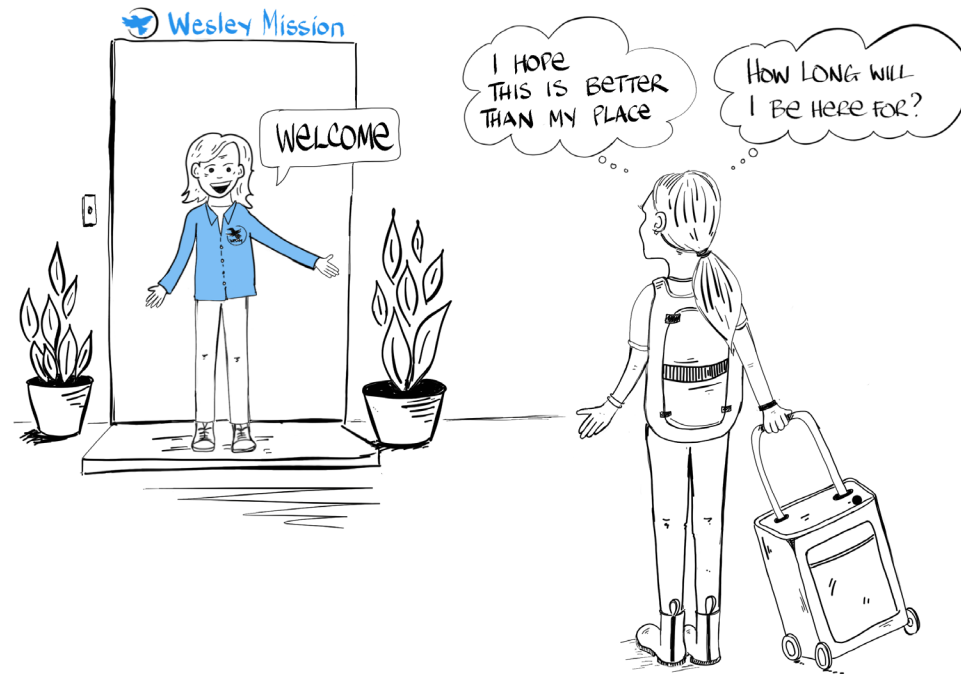
independence by connecting them with education, employment, counselling and permanent housing solutions. We can only continue doing this with the ongoing support of compassionate people.



*Australian Bureau of Statistics, 2018

Hope and a future

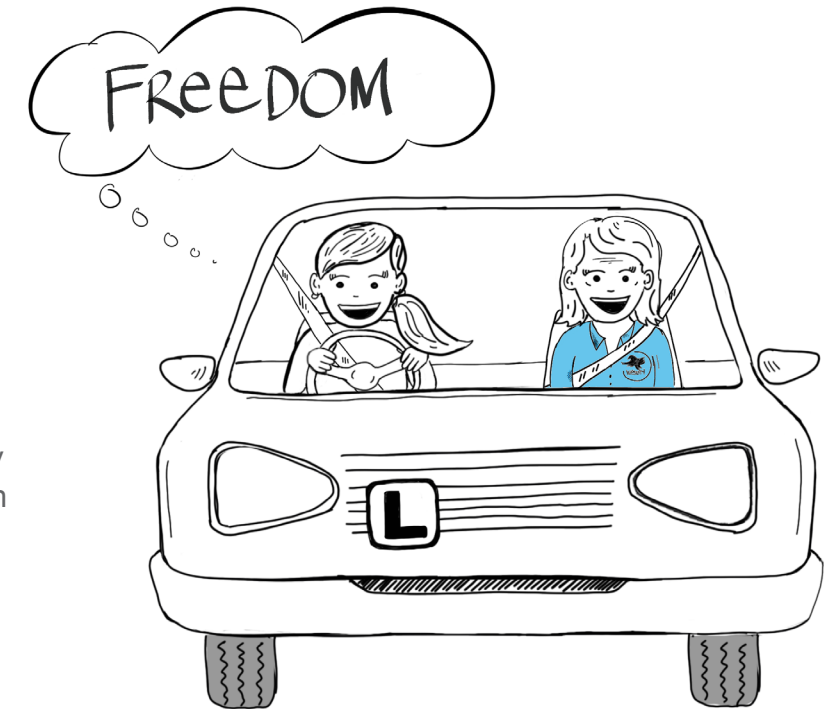
Do you believe all children deserve to live in a safe and stable home? So do we. We help children remain in the care of their birth families whenever this is a safe option. **Families receive intensive support for three months with 24-hour access** to a case worker. Following this, they're provided with counselling and coaching. When needed, we also help children find stability by placing them in foster care or adoption.



A safe home for a child is the gift of a lifetime.

Gaining identity

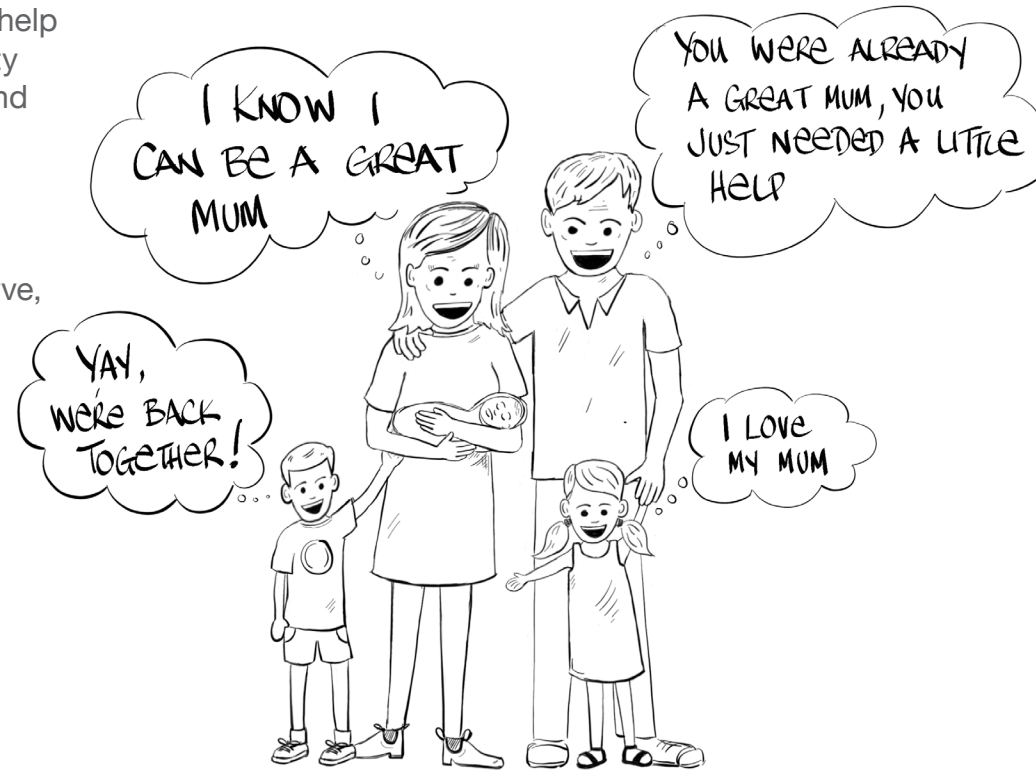
Our adolescent years are a foundational time. So if a young person's safety, wellbeing or welfare is at risk, the effects can be lifelong. Wesley Mission's practical programs support teenagers' wellbeing, helping them and their families address issues relating to their mental health, drug and alcohol abuse, homelessness, education, employment and relationships. By investing in someone's journey towards adulthood, we strengthen them and society as a whole.



At-risk teens need support to avoid a lifetime of challenges.

Enjoying the simple things in life

Generous people like you help us build a parent's capacity to care for their children and ensure their wellbeing and safety. This keeps families together, so children can grow up in the nurturing environment they all deserve, with their physical and emotional needs met.

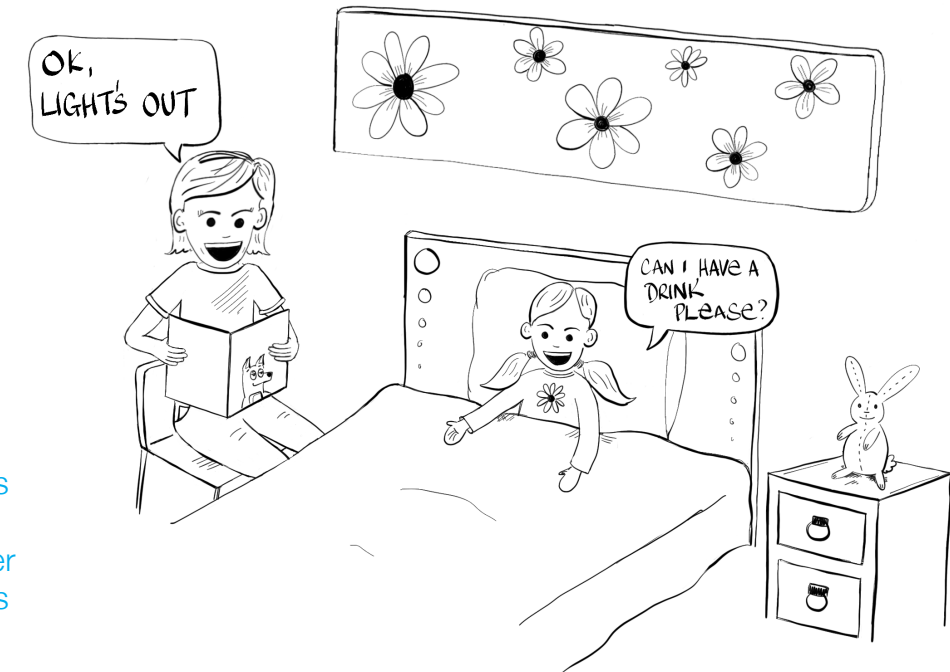


No child should miss out on the joy of being a child.

Reconnecting

With our supporters beside us, we journey alongside mums towards positive mental health outcomes for them and their kids. This includes through our programs which provide parenting and mental health support to mums living with complex mental health conditions whose children are under the age of five.

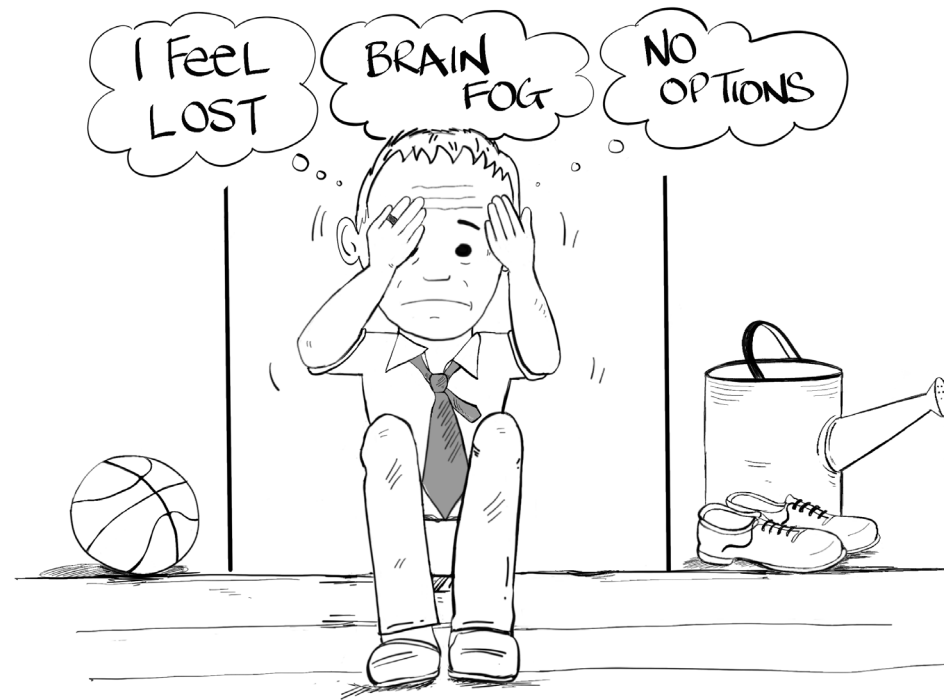
"I would have suffered severely from post-natal depression long term if I hadn't received support from the whole team. Getting this assistance meant I became a more confident mum." – A mother who participated in our programs



Being there in a crisis

Around half of all Australians will experience mental health illness at some point*. And by this time tomorrow, at least another eight Australians will have taken their own life**. When people need urgent help, Wesley Mission can support them thanks to our caring donors.

People's generosity helps us to deliver high quality and compassionate mental health services to people in distress and their families. This includes specialist clinical treatment, our **Wesley LifeForce Suicide Prevention Networks and Lifeline Sydney & Sutherland**, the telephone crisis support service we began in 1963.

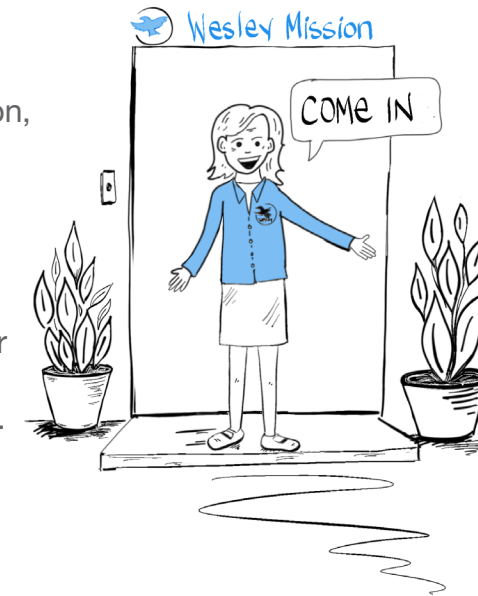


Timely help for people experiencing a mental health crisis can save their lives.

*Australian Government, Department of Health
**Australian Bureau of Statistics, 2019

From no options to plenty of options

When you support Wesley Mission, you offer choices to those who feel like they have none. Our help spans mental health services, accommodation, social support, emergency relief, employment support, youth programs and aged care. This service breadth uniquely places us to help people address barriers to their wellbeing and overcome their various challenges longer-term.



Addressing the needs of the whole person.

Think differently, leave a legacy gift

Leaving a gift in your Will is something anyone can do. Big or small, your gift can make a lasting difference to those who are homeless, disadvantaged and marginalised.

Your generous legacy to Wesley Mission can provide the extra funds we need to start, maintain or expand an important facility or service. It's income we can count on to grow and reach more people in great need.

Through a gift in your Will, your influence and generous spirit can continue to be felt and seen for generations to come.

Your choices today can change lives tomorrow.



Blessed to bless others

Children tend to follow their parents' example. So why not sit down with your children and talk with them about giving, and involve them in volunteering or donating to Wesley Mission or another favourite charity? This will help them see they can make a difference too.



A powerful impact

Chantelle says she heard the stories of the foster children we support and it touched her heart deeply. “I thought, ‘I’d love to be able to contribute to that,’” she says.

Then Chantelle and her husband came along to a Wesley Mission Wills day to have their Wills prepared by an independent solicitor. This opened their eyes to the opportunity to specify a gift to charity. Recognising their power to change lives, they asked the solicitor to include a gift in their Wills to Wesley Mission.

Chantelle says the process was simple and the decision was an expression of the strong faith they both share.

“We thought it would be a wonderful way to contribute later on down the track. One of our core beliefs for a long time has been ‘blessed to be a blessing.’ We’ve been given a lot, and we want to be able to pass that on.”

“Being able to leave something for someone to be blessed beyond our time is a very worthwhile cause.



“At the end, when everything is said and done, we can bless others,” says Chantelle.

Will you consider a gift with lasting impact?

Dear friend,

Thank you for reading through the stories in this booklet. I am so grateful that caring people like you are considering how they can make a significant difference in people’s lives.

It is a powerful statement to make, both now and into the future that the measure of our days is love and concern for other people.

Much of Wesley Mission’s life-changing work would not exist without the gifts our faithful supporters have included in their Wills. All kinds of people, people just like you, are continuing in the

tradition of Lancelot Iredale, Chantelle and others, whose generosity lays the foundation for our services today.

Without their kindness and vision, much of our essential work would not be possible. Their gifts have ranged from a few hundred dollars to whole estates. But whatever the size, each gift is deeply appreciated.

You may never know the people who your life will impact or the transformation that your gift will make possible. But as the custodians of your legacy, Wesley Mission will make sure that future generations have hope, that innovative services

continue to expand and that our doors are always open to people in desperate need.

So, after providing for your loved ones and consulting with a legal professional, please consider including a gift in your Will. Your decision today will change the future for people in need.

Every blessing,



Rev Stu Cameron
CEO/
Superintendent



Get involved

Leave a lasting legacy with a gift in your Will

wesleymission.org.au/bequests
bequests@wesleymission.org.au
(02) 9263 5548

Wesley Mission

220 Pitt Street, Sydney NSW 2000
PO Box A555, Sydney South NSW 1235
(02) 9263 5555

ABN 42 164 655 145

Wesley Mission is a part of the Uniting Church in Australia

wesleymission.org.au

Connect with us on social media



Do all the good you can
because every life matters